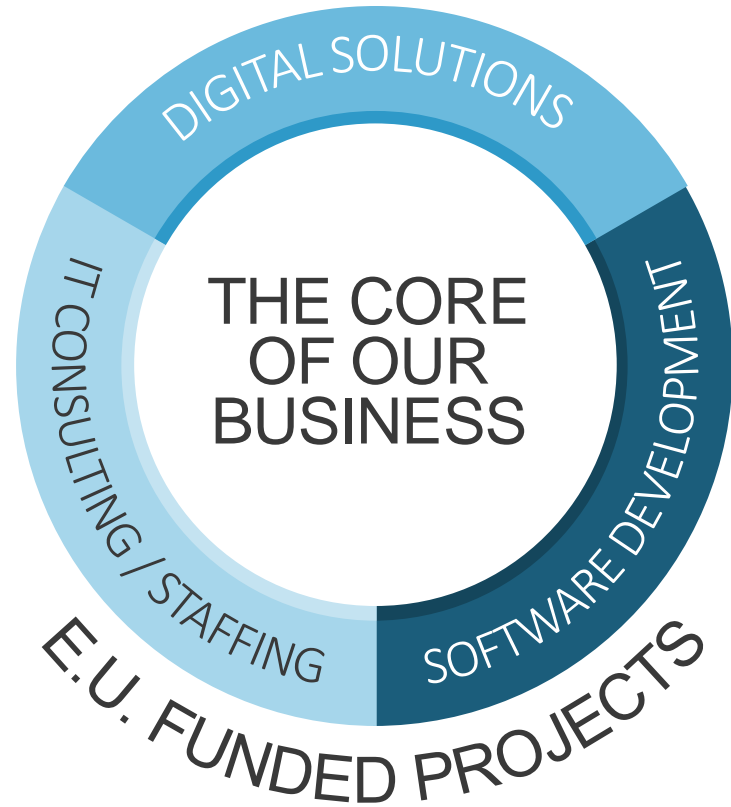


SOFT GALAXY COMPANY PRESENTATION

April 2020

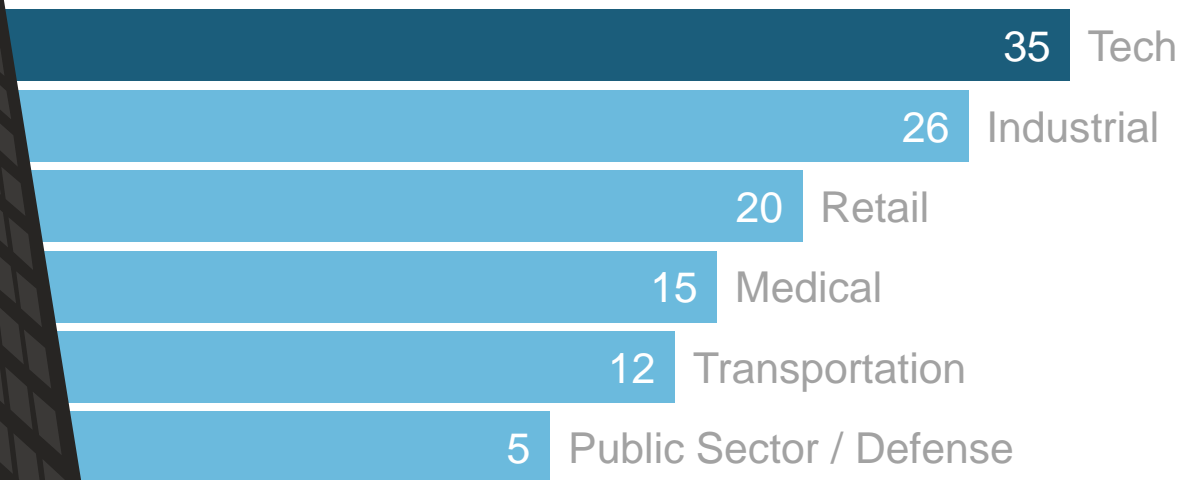
OUR BUSINESS MODEL

Close to our customers all
over the world

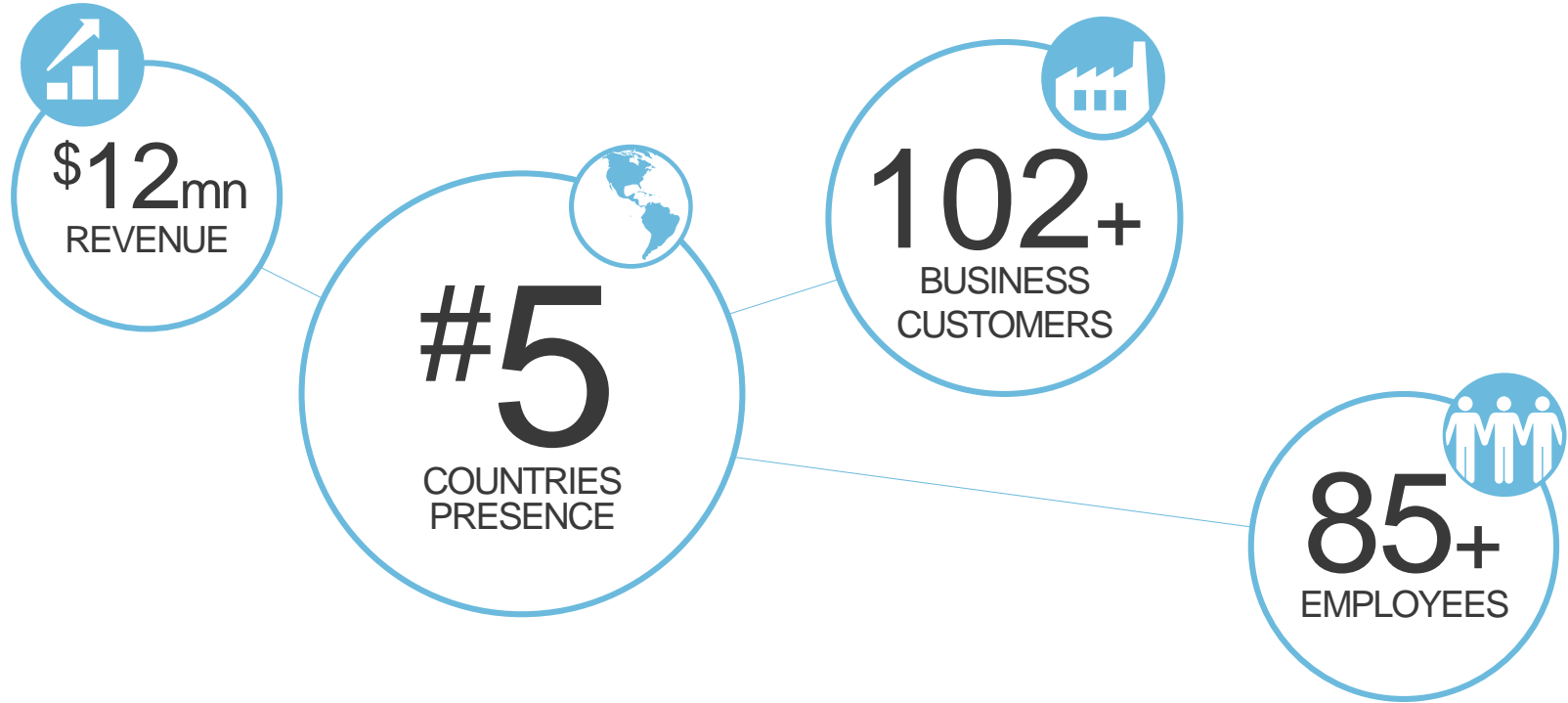




Number of Accounts by Vertical



KEY STATS IN 7 YEARS OF ACTIVITY



OUR GLOBAL PRESENCE

Local access with staff in most of the major markets



SERVICES LIST

Our comprehensive services portfolio comprises three Business Groups

DEVELOPMENT

- High-end Software & Application Development
 - 10 Nearshore/Offshore Development
 - 10 Implementation
 - 10 Management
 - 10 Quality Assurance
- Application Management Services
- Software lifecycle projects

CONSULTING

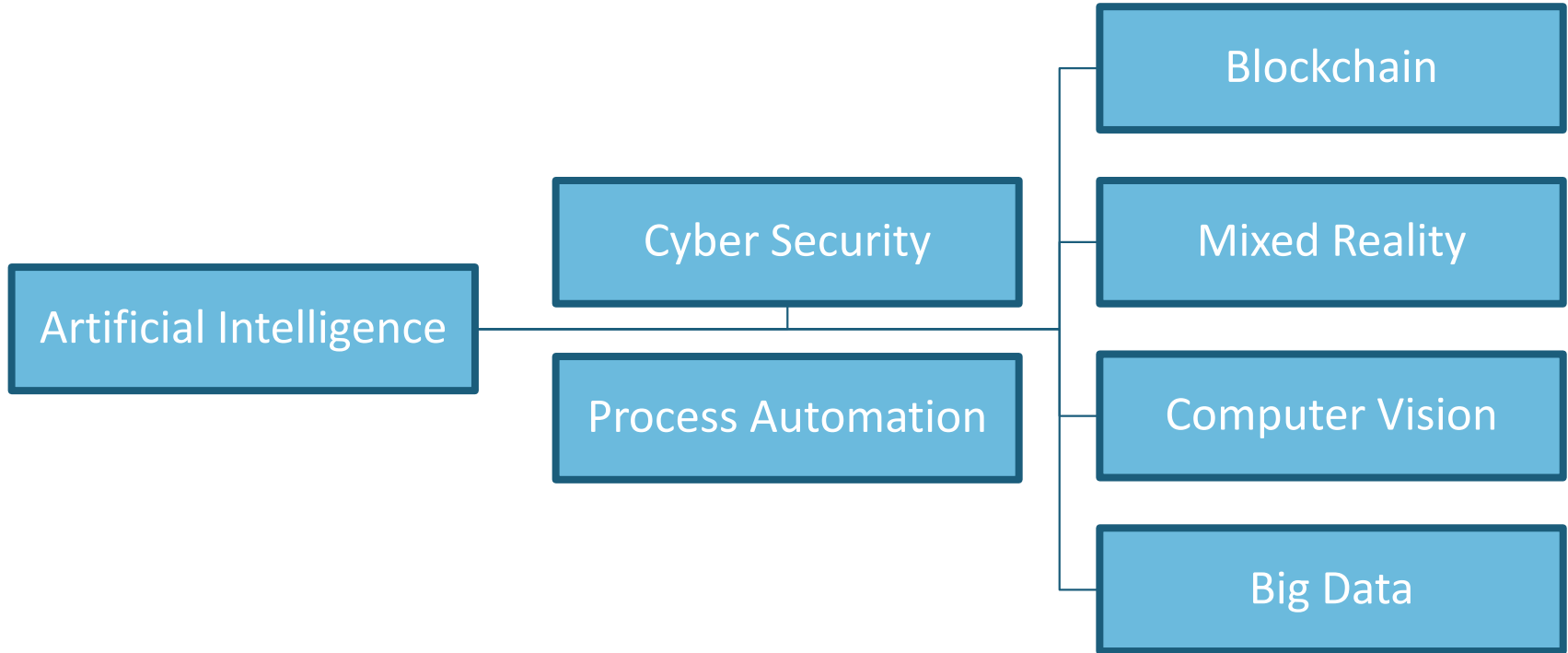
- IT Architecture
- E-Commerce and Portals
- Mobile Enterprise
- Big Data / Business Intelligence
- Apps
- Expert staffing & Recruiting
- Integrations

RESEARCH

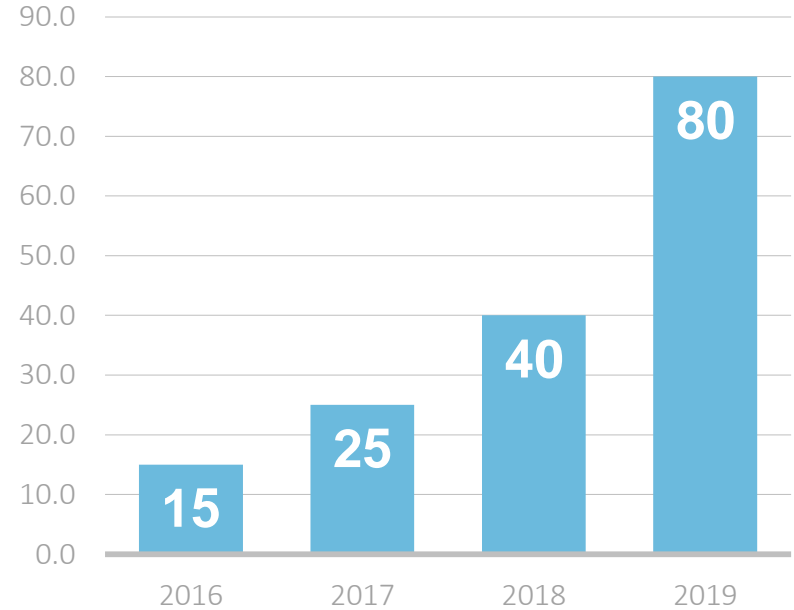
- Research & Development
- EU Funded Programmes
- Participation in the National Plan for Research, Technological Development and Innovation
- NASA Grants
- Norway Grants

SKILLS AND COMPETENCIES

We work on a wide range of technologies



HUMAN RESOURCES **GROWTH**



STRATEGIC PARTNERS



STEFANINI



ORANGE



pwc

PwC

AMF-B



www.amf-b.ro

ANOFM



www.anofm.ro

Technical Military Academy



www.mta.ro

Bamboo Group



www.bambooclub.ro

BoA Group



www.boa-beatofangels.com

Bank of America



www.bankofamerica.com

Bullguard



www.bullguard.com

Romanian Chamber of Commerce



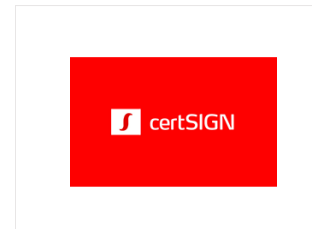
www.ccir.ro

Cegeka



www.cegeka.com

Certsign



www.certsign.ro

National Defense College



www.cnap.unap.ro

Dacia



www.dacia.ro

Eckerle Automotive



www.eckerle-gruppe.com

Ministry of Environment



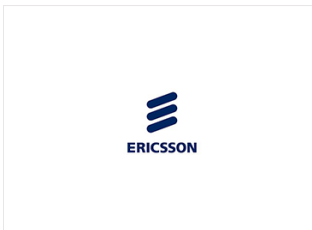
www.incdecoind.ro

Emendo Biotherapeutics



www.emendobio.com

Ericsson



www.ericsson.com

Eurolines



www.eurolines.ro

First Bank



www.firstbank.ro

Ford



www.ford.ro

Romanian Tennis Federation



www.frt.ro

Grenke



www.grenke.ro

Internet & Mobile World



www.imworld.ro

INCSMPS



www.incsmps.ro

Ministry of Defense



www.mapn.ro

Mazda



www.mazda.ro

Ministry of Labor



www.mmuncii.ro

Noire



www.noire.ro

Paralela 45



www.paralela45.ro

Pentalog



www.pentalog.fr

Bucharest District 3 City Hall



www.sector3primarie.ro

Raiffeisen Bank



www.raiffeisen.ro

Sanofi



www.sanofi.com

SKV



Solidus Technologies



www.solidustechnologies.co.uk

Protection and Guard Service



www.spp.ro

Special Telecommunications Service



www.sts.ro

Ubisoft



www.ubi.com

Urgent Cargus



www.urgentcargus.ro

UTI



www.uti.ro

888 Holdings



www.888.com

INTEGRATED SYSTEM FOR SUPPORT AND COMMAND OF CRISIS RESPONSE ACTIONS

The project “Integrated system for support and command of intervention teams in crisis situations” aims to develop an integrated system, comprising hardware, software and communication resources needed to assure the planning and coordination of missions in crisis situations. A subsystem will be developed for calculation of the explosion parameters in air, simulation, analysis and evaluation of the impact of shockwaves on buildings, simulation and evaluation of the effect of an explosion on persons and also an integrated system comprising communications and informatics destined for assurance of bidirectional information streams comprising video streams, physiologic and location data of the intervention team.

The project aims to develop an innovative integrated system SIC4I (innovative system, command, control, communications, computers and information) in accordance with the requirements stated of SPP and interconnected with with other systems from SNAOPS, with a hardware structure destined to provide communications and another optimized for simulation and processing of data, with TEMPEST assurance, using cluster GPU architecture and a software integrated system.

9SOL

Integrated system for support and command of crisis response actions



- Calculation of the explosion parameters in air, simulation, analysis and evaluation of the impact of shockwaves on buildings, simulation and evaluation of the effect of an explosion on persons.
- Computer assisted identification and analysis of threats, vulnerabilities, evaluation of risks and mission planning, decision substantiation and coordinating the activity of intervention teams and also the analysis of impact of the overall result of mission.
- Realization of a system for accessing and monitoring remotely of physiologic and location data acquired through mobile devices (biosensors, smartwatch, bracelets) worn by the intervention team ongoing mission.

Case Study – SixSenses VR

VIRTUAL REALITY LIVE STREAMING PLATFORM

Today, any live streaming workflow can be built on Azure Media Services to stream any standard camera to an audience of millions with the click of a few buttons (or a few lines of code.) This same proven platform and set of APIs can be used along with a partner like SixSenses VR to provide a complete live 360°/VR experience to your customers.

Live streaming makes dynamic and active engagement. In the previous couple of years, we've seen a sensational increment in the utilization of standard video. Individuals are watching more video-based content than any time in recent memory. From cell phones to tablets, video content is assuming control. Also, in addition, live video use is gradually outperforming standard video-watching patterns.

Our platform gives an approach to produce social engagement with your audience, giving them the quick chance to impart their remarks and worries to you progressively and, when conceivable, for you to promptly handle these inquiries and concerns.

SIXSENSES VR

Virtual Reality Live Streaming Platform



- The most innovative video conferencing platform designed to change the way people interact with each other in the cyber space by bringing the latest trends of video content distribution in real-time together with Virtual Reality and Smart Gadgets .
- Officially launched at Malta Blockchain Summit in November 2018, the project was showcased and reviewed as being the most realistic experience seen so far in Virtual Reality.
- The new version, scheduled to be released in Q3 2020 will include haptic features and integrations with VR gloves, clothing and body kits.

BIG DATA ANALYSIS AND FORECASTING TOOL

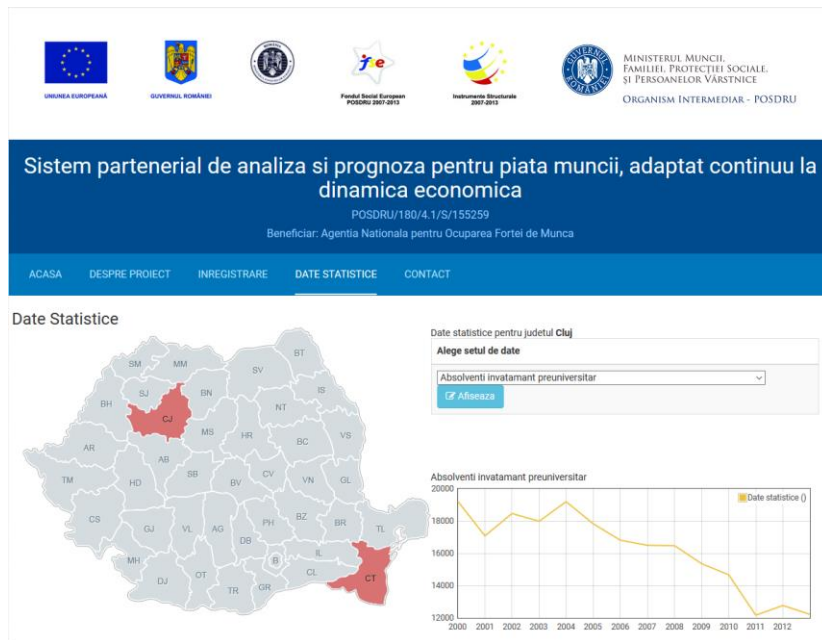
A modern, dynamic software platform enabling organizations to develop, govern, and automate data science and AI pipelines from laptop to production. Scientists can run large-scale model deployments on high-performance production clusters.

Great for both statisticians and individuals without expertise in statistics, our platform has easy-to-use tools that let you perform predictive analysis in a simpler manner.

Forecasting processes can be a hassle, so this tool streamlines them for you to help you focus on the most important, high-value decisions. With this platform giving you the power of forecasting, you can perform large-scale, automatic forecasts as well as time series exploration. Even without prior knowledge about writing code, you generate better forecasts with less manual intervention.

ANOFM

Big Data Analysis and Forecasting Tool



- Efficiently track all client movement across all communication channels in multiple sales funnels on a single platform. Data gathered can be dissected for gathering actionable insights and recalibrating of strategies.
- Whether you practice evidence-based medicine or human capital management, our platform will surely be able to help you make smarter decisions for your organization.
- System designed for modern technical computing.

MANAGEMENT TEAM

Highly skilled professionals with over 20 years of experience in the IT field



ADRIAN STOICA

Founder and Global CEO of
Soft Galaxy



ANAMARIA POPA

EMEA – Chief Operating
Officer



ADRIAN PAVEL

Managing Partner– North
America



CATALIN D.

Chief Technology Officer -
AI Professional

CONTACT DETAILS

office@softgalaxy.us



Bucharest

22nd Tudor Vladimirescu Blvd.
Green Gate Building, 8th Floor
+40 (724) 636-637

Malta

3A, Elia Zammit Street
St. Julian's, Malta
+40 (754) 080-880

Chicago

545 N McClurg CT
Chicago, IL, 60661
+1 (206) 669-9802

Seattle

3811 14th Ave West Seattle
Seattle, WA, 98110
+1 (206) 669-9802